

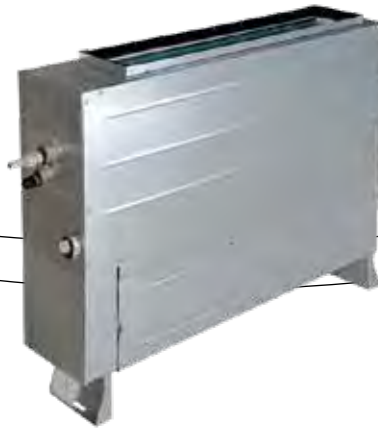
RECESSED FLOOR

6 CAPACITIES
2.20~7.10 kW

COMPACT DESIGN
200 mm depth on all capacities

WASHABLE FILTER
better air quality

M-V-FYA-221~711-G



Model			M-V-FYA-221-G	M-V-FYA-281-G	M-V-FYA-361-G
Control (included)			Wired control		
Rated capacity	Cooling	kW	2.20	2.80	3.60
	Heating	kW	2.50	3.20	4.00
Electrical data					
Power supply		Ph-V-Hz	1-220~240V-50Hz		
Power absorption		W	35	35	43
Product specifications					
Dimensions	WxHxD	mm	700x615x200	700x615x200	700x615x200
Net weight		Kg	23	23	23
Sound pressure level at 1 m	H/M/L	dB(A)	30/28/25	30/28/25	33/31/28
Volume of air treated	H/M/L	m ³ /h	450/350/250	450/350/250	550/450/350
Fan static pressure	Std/Max	Pa	10/40	10/40	10/40
Connection diameter	Liquid/Gas	mm (inch)	6.35 (1/4) / 9.52 (3/8)		6.35 (1/4) / 12.74 (1/2)
	Condensate	mm	25	25	25
Optional parts					
Centralized control			M-V-CC-T255-G2 / M-V-CC-T32-G (simplified)		

Model			M-V-FYA-451-G	M-V-FYA-561-G	M-V-FYA-711-G
Control (included)			Wired control		
Rated capacity	Cooling	kW	4.50	5.60	7.10
	Heating	kW	5.00	6.30	8.00
Electrical data					
Power supply		Ph-V-Hz	1-220~240V-50Hz		
Power absorption		W	45	80	90
Product specifications					
Dimensions	WxHxD	mm	900x615x200	1100x615x200	1100x615x200
Net weight		Kg	27	32	32
Sound pressure level at 1 m	H/M/L	dB(A)	33/31/28	35/33/30	37/35/33
Volume of air treated	H/M/L	m ³ /h	650/500/400	900/750/600	1100/900/700
Fan static pressure	Std/Max	Pa	15/60	15/60	15/60
Connection diameter	Liquid/Gas	mm (inch)	9.52 (3/8) / 15.9 (5/8)		
	Condensate	mm	25	25	25
Optional parts					
Centralized control			M-V-CC-T255-G2 / M-V-CC-T32-G (simplified)		